

# **POWEREX**<sup>®</sup>



## **Enclosed Claw Vacuum Systems**

*The industry-first sound-reducing enclosed claw vacuum system*

## WhisperVAC™ SOUND ENCLOSURE CABINET

Powerex's trademarked sound enclosure systems offer the lowest noise levels in the industry. Each system is packaged in a rigid steel frame with powder coated panels and lined with sound-deadening insulation.

- Claw vacuum pumps are enclosed within sound-reducing panels – ***an industry first!***
- Sound intensity is reduced by an average of 14 dBA over comparable open frame systems – ***4x sound reduction***
  - All systems are well within NIOSH limits of 8 hour exposure
  - Helps protect the hearing of healthcare facility employees
  - Improves working environment near the medical vacuum system
  - Helps avoid disturbing patients and/or hospital employees
- Ultimate sound reduction achieved when packaged with Powerex WhisperAir™ enclosed scroll medical air systems – ***the quietest source equipment in the industry!***



## HEARING LOSS PREVENTION

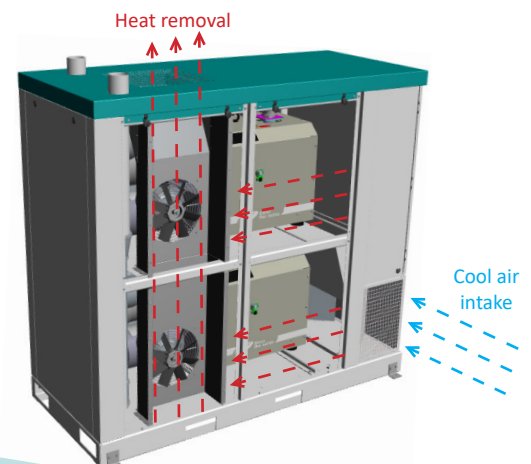


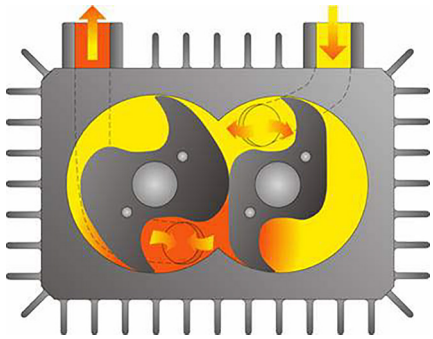
Occupational hearing loss is the most commonly recorded occupational illness in manufacturing, accounting for ***1 in 9 recordable illnesses***. Powerex WhisperVac™ technology provides a real solution for workers operating in loud mechanical rooms, as well as any facility employees who are ever in close proximity to the vacuum system.

***Hearing loss is a significant cost that is preventable!***

## PATENT-PENDING COOLING SYSTEM

Patent-pending internal pump cooling system ensures vacuum pumps operate well within acceptable temperature ranges.



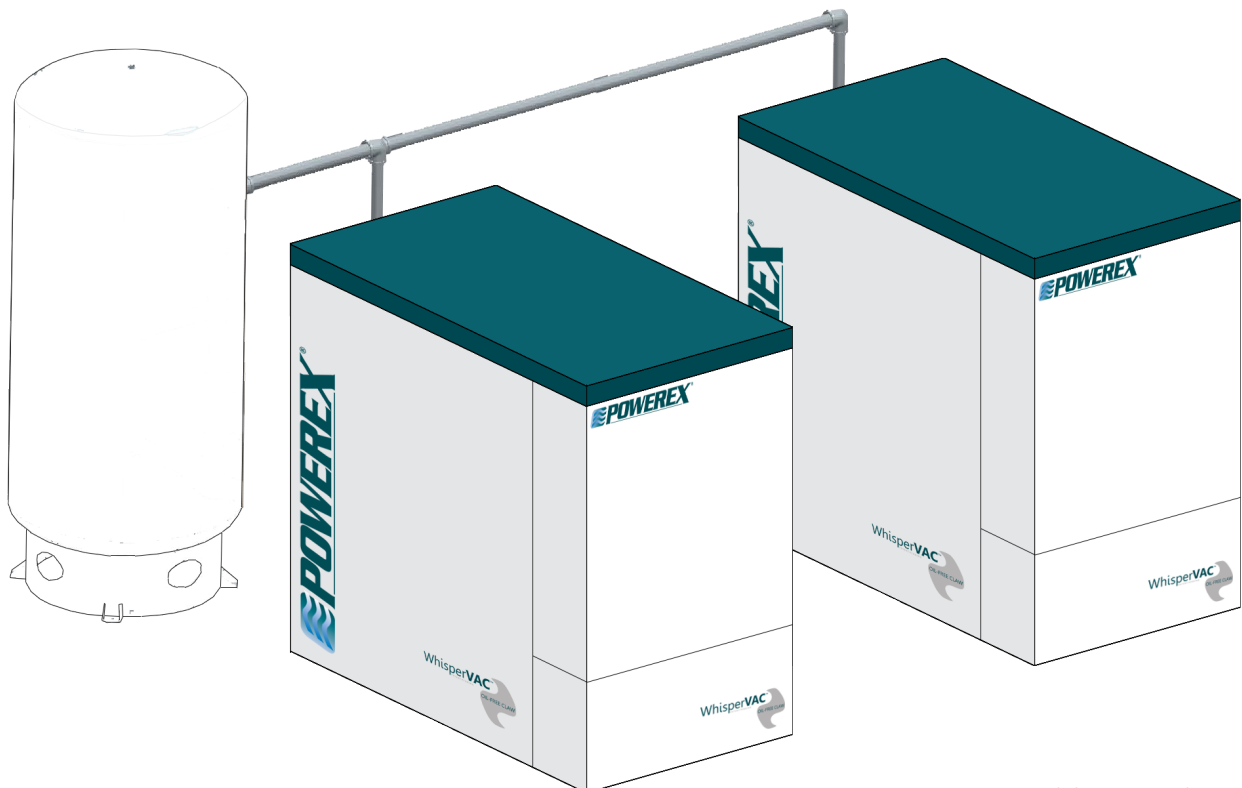


## DRY CLAW PUMP

Inside the pump housing, two claw shaped rotors take in air as they rotate in opposite directions. The air is compressed by the rotors, then discharged through a silencer to atmosphere. The pumping chamber is dry. There is no contact between the rotors or the cylinder wall, eliminating internal wear and parts to replace. The rotors are synchronized by gears requiring a small amount of oil in the gear housing. Gear oil change requirements are minimal at approximately 20,000 hours.



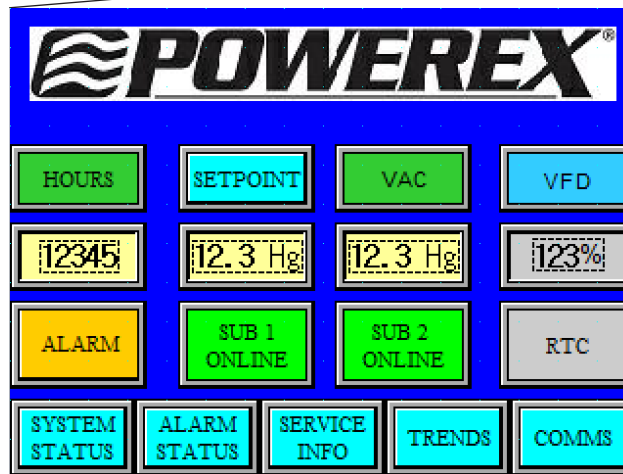
## SYSTEM CONFIGURATION



MCEQ0755 quadplex 7.5 HP shown

## SYSTEM CONTROLS

- Robust Primary-Subordinate controls logic
- Auto fail-safe & auto reconnect
- UL508A listed and labeled, NEMA 4/12 enclosure
- PLC Controller and 6" color HMI touchscreen displays the operating status of the system
- Easily expandable – up to 6 pumps
- Building automation gateway with BacNet® protocol
  - Email notifications for alarms and service alerts
- Visual and audible alarms for:
  - System overload trip
  - High temperature conditions
  - Service intervals
- Panel door includes:
  - Audible and visual alarms
  - HOA switch for each pump



### BENEFITS

- Fits through a standard 36" door
- Lowest noise level on the market
- No need for a separate room for vacuum system due to noise
- Most energy efficient technology
- Oil-free compression chamber
- Extremely low maintenance
- Suitable for WAGD applications
- Air cooled
- Standard outlet muffler provided
- Maintenance friendly
  - Easy to remove latched panels
  - Isolator bolt elevator rail for lower pump removal

### OPTIONS & ACCESSORIES

- Premium Warranty
- Variable Frequency Drive (VFD) Controls
  - Saves up to 40% in energy costs vs. standard Load/Unload
- Internal Tank Lining



## ENCLOSED CLAW VACUUM SYSTEMS SPECIFICATIONS

NFPA 99 MEDICAL SYSTEMS					
Model	System HP	Pump HP	SCFM @ 19" Hg*	Tank (gal)	dB(A) Level*
<b>Duplex</b>					
MCED0504	10	5 (2)	33	120	64
MCED0704	15	7.5 (2)	53	120	64
MCED0754	15	7.5 (2)	68	120	64
MCED1005	10	10 (2)	99	200	68
MCED1505	15	15 (2)	120	200	68
<b>Triplex</b>					
MCET0505	15	5 (3)	66	200	66
MCET0705	22.5	7.5 (3)	106	200	66
MCET0755	22.5	7.5 (3)	136	200	66
MCET1005	20	10 (3)	198	200	72
MCET1505	30	15 (3)	240	200	72
<b>Triplex Expandable to Quadplax</b>					
MCET0505-EX4	15 (20)	5 (3)	66	200	66
MCET0705-EX4	22.5 (30)	7.5 (3)	106	200	66
MCET0755-EX4	22.5 (30)	7.5 (3)	136	200	66
MCET1005-EX4	20	10 (3)	198	200	72
MCET1505-EX4	30	15 (3)	240	200	72
<b>Quadplex</b>					
MCEQ0505	20	5 (4)	99	200	68
MCEQ0705	30	7.5 (4)	158	200	68
MCEQ0755	30	7.5 (4)	203	200	68
MCEQ1005	30	10 (4)	297	200	74
MCEQ1505	45	15 (4)	360	200	74
<b>Pentaplex</b>					
MCEP0755	37.5	7.5 (5)	272	200	69
MCEP1505	60	15 (5)	480	200	74
<b>Hexaplex</b>					
MCEH0755	45	7.5 (6)	340	200	70
MCEH1505	75	15 (6)	600	200	76

\*Shown with one pump in reserve per NFPA 99

LABORATORY SYSTEMS					
Model	System HP	Pump HP	SCFM @ 19" Hg	Tank (gal)	dB(A) Level
<b>Duplex</b>					
LCED0504	10	5 (2)	66	120	66
LCED0704	15	7.5 (2)	106	120	66
LCED0754	15	7.5 (2)	136	120	66
LCED1005	20	10 (2)	198	200	68
LCED1505	30	15 (2)	240	200	68
<b>Triplex</b>					
LCET0505	15	5 (3)	99.0	200	68
LCET0705	22.5	7.5 (3)	158	200	68
LCET0755	22.5	7.5 (3)	203	200	68
LCET1005	30	10 (3)	297	200	72
LCET1505	45	15 (3)	360	200	72
<b>Quadplex</b>					
LCEQ0505	20	5 (4)	132	200	69
LCEQ0705	30	7.5 (4)	211	200	69
LCEQ0755	30	7.5 (4)	271	200	69
LCEQ1005	40	10 (4)	396	200	74
LCEQ1505	60	15 (4)	480	200	74
<b>Pentaplex</b>					
LCEP0755	37.5	7.5 (5)	339	200	70
<b>Hexaplex</b>					
LCEH0755	45	7.5 (6)	407	200	70

*For more information contact your  
local Powerex distributor or Powerex  
sales representative today*



**The leader in  
Medical Gas  
Solutions**



**POWEREX®**